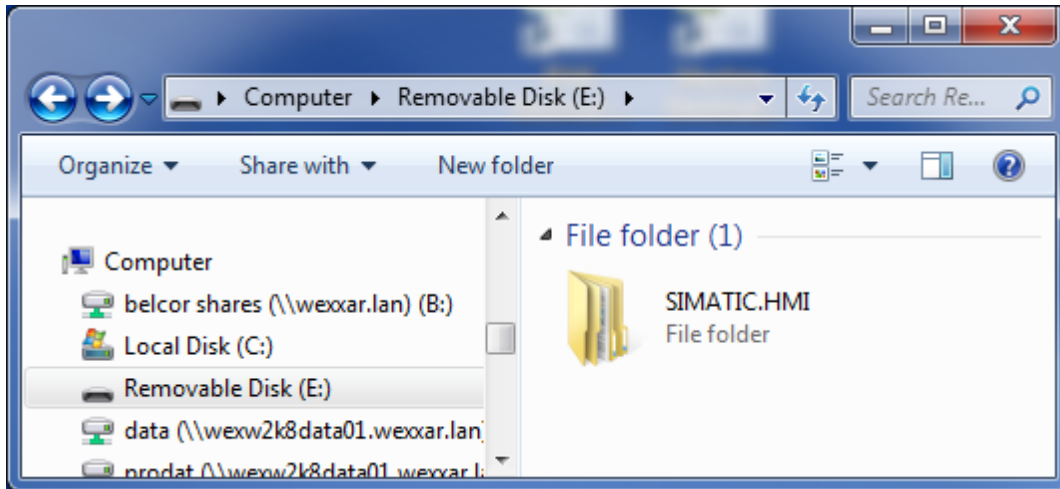
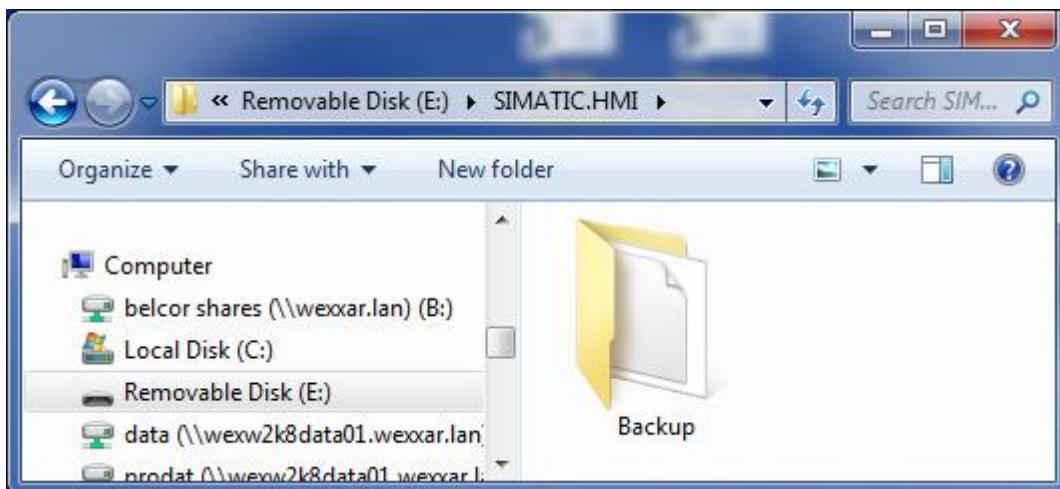


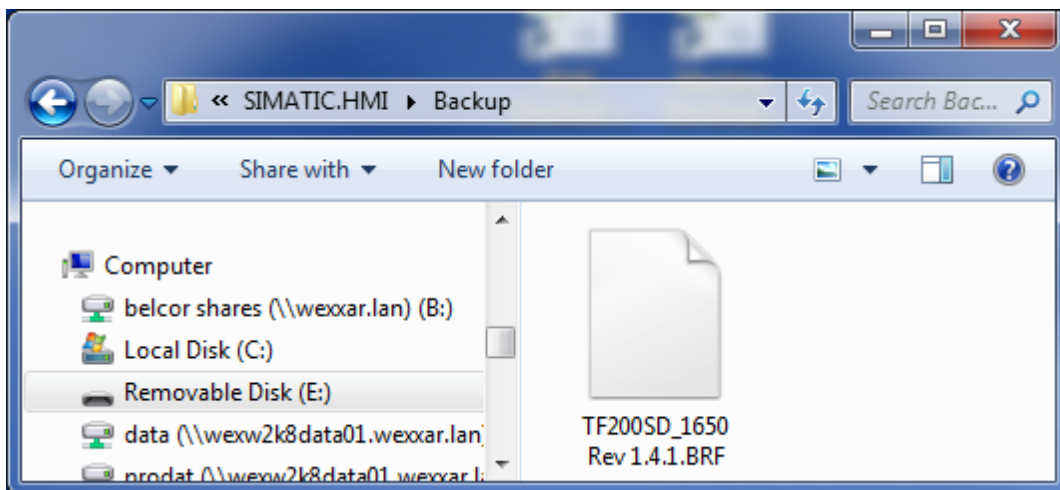
1. In USB / SD Card create folder named **SIMATIC.HMI**



2. Inside **SIMATIC.HMI** folder create folder named **backup**



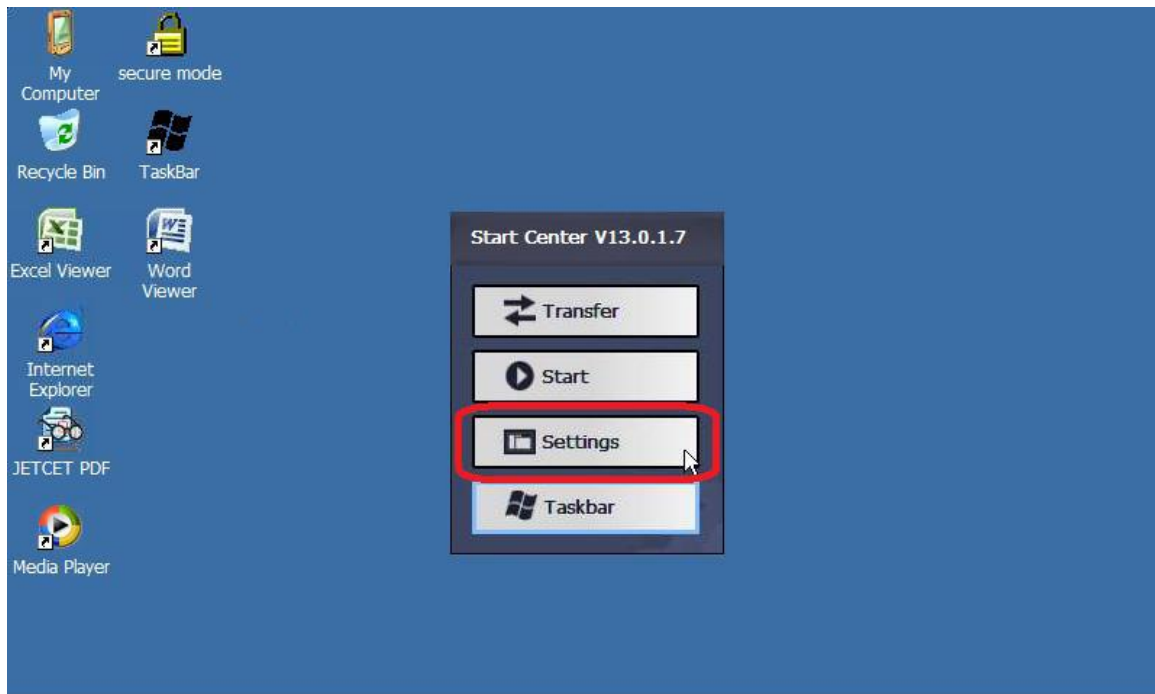
3. Copy \*.BRF file to **backup** folder



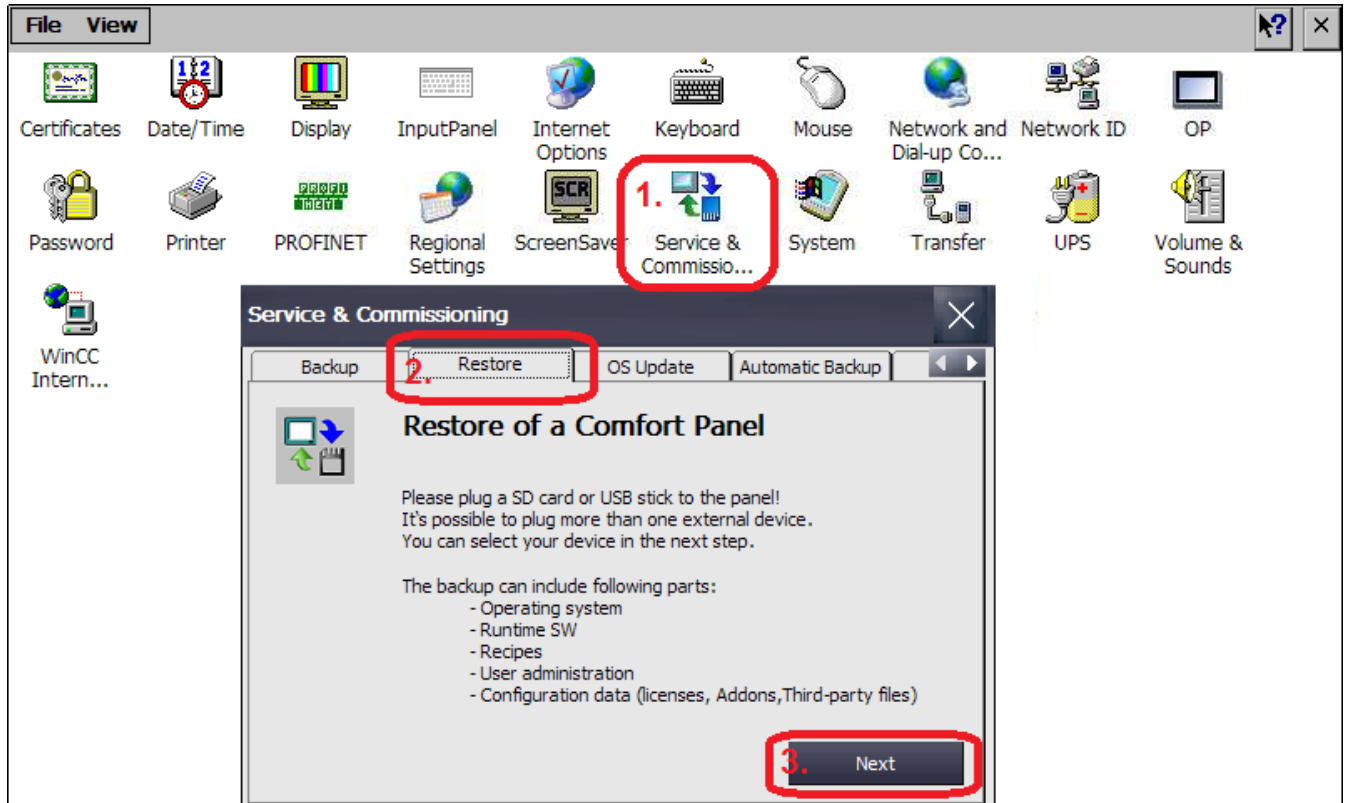
4. Insert either USB or SD into the HMI



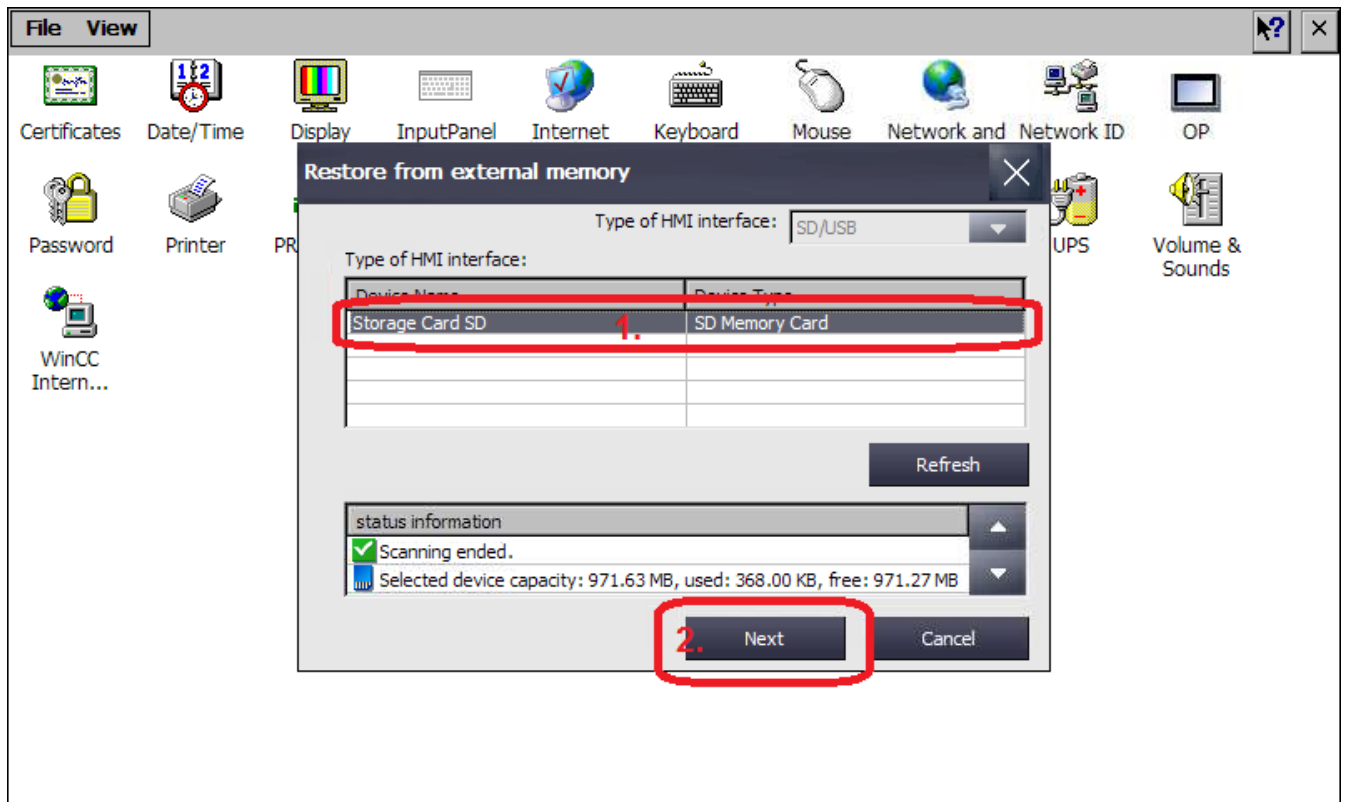
5. Power cycle the HMI, on the start up screen, press the “Settings”



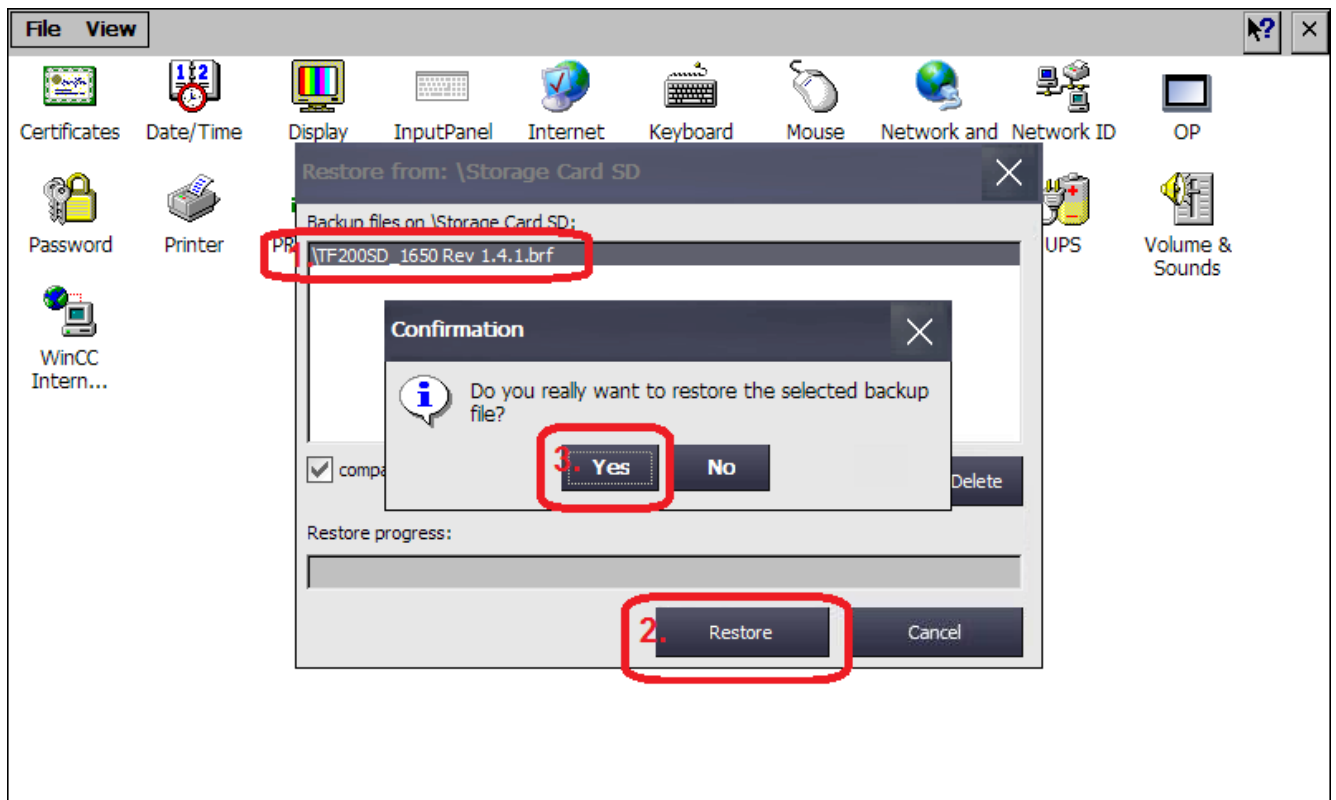
6. Press icon **Service & Commissioning**, then **Restore**, then **Next**



Select storage media and press **Next**



Select \*.brf file, then press **Restore**, then press **Yes**



7. After backup was successfully restored, power cycle the HMI